

**TO:** JAMES L. APP, CITY MANAGER  
**FROM:** DITAS ESPERANZA, CITY ENGINEER *DE*  
**SUBJECT:** FINAL APPROVAL TO REMOVE OAK TREES  
**DATE:** DECEMBER 21, 1999

**Needs:** For the City Council to give its final approval to remove oak trees.

- Facts:**
1. Tentative Tract 2223 (Arciero) was approved to be constructed in two phases by the Planning Commission on August 26, 1996. Phase I construction is now complete.
  2. The applicant is preparing to construct the second phase of the project. With the second phase, several oak trees will need to be removed.
  3. In addition, the applicant is requesting that two additional oak trees be removed; a 20-inch diameter (Tree #15) and a 22-inch diameter (Tree #12). These trees were not included in the originally approved Tentative Tract 2223.

**Analysis and**

**Conclusion:** The tentative tract map that was approved by the Planning Commission included the removal of 13 oak trees. However, the City Council would need to give the final approval to remove the trees in accordance to the Oak Tree Ordinance.

**Policy**

**Reference:** Resolution No. 96-052 of the Planning Commission  
Oak Tree Ordinance

**Fiscal**

**Impact:** None

- Options:**
- A. That the City Council adopt the attached Resolution to remove 15 oak trees.
  - B. That the City Council amend, modify or reject the above option.

- Attachments: (3)
- 1) Resolution
  - 2) Oak Tree Inventory
  - 3) Color Photos

RESOLUTION NO. 99-

A RESOLUTION OF THE CITY COUNCIL OF THE CITY OF PASO ROBLES  
GIVING PERMISSION TO REMOVE OAK TREES  
AS PART OF THE DEVELOPMENT OF TRACT 2223-2

---

WHEREAS, the Planning Commission approved the site plan for Tentative Tract 2223 to develop a 40-acre site into a 103 residential lot; and

WHEREAS, this approval requires the removal of thirteen oak trees; and

WHEREAS, in addition to the original thirteen oak trees, the applicant is asking that a 22-inch diameter (Tree #12) and a 20-inch diameter (Tree #15) oak trees be removed.

THEREFORE, BE IT RESOLVED AS FOLLOWS:

SECTION 1. That the City Council of the City of Paso Robles does hereby give permission for the removal of thirteen (13) oak trees as was required on the approved Tentative Tract 2223.

SECTION 2. That the City Council of the City of Paso Robles does hereby give permission to remove two additional trees which were not part of the original approval.

SECTION 3. That the applicant is required to install two (2) 24-inch box oak trees (1 – 1½ minimum caliper) for each oak tree removed which are greater than 3-inches in diameter.

PASSED AND ADOPTED by the City Council of the City of Paso Robles, this 21<sup>st</sup> day of December, 1999, by the following vote:

AYES:  
NOES:  
ABSENT:  
ABSTAIN:

---

Duane J. Picanco, Mayor

ATTEST:

---

Sharilyn M. Ryan, Deputy City Clerk

**EMK&Associates, Inc.**

Engineers • Surveyors • Planners

AGENDA ITEM #

13

City Council Mtg

12/31/99

TRACT 2223 PHASE TWO  
OAK TREE EXHIBIT

RECEIVED

DEC 3 1999



HIGHWAY 46



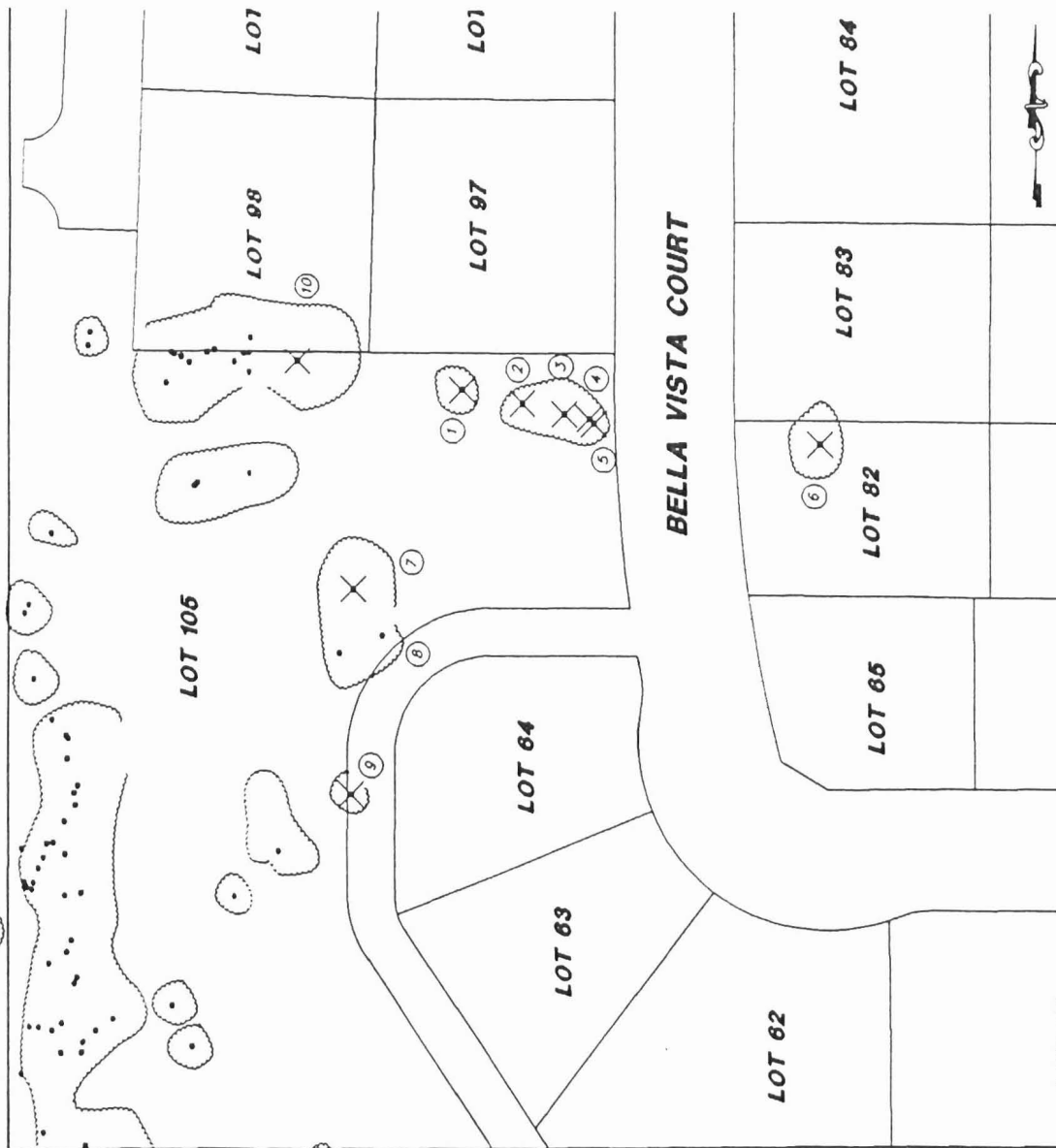
**BELLA VISTA ESTATES  
TRACT 2223 PHASE 2  
EXHIBIT OF ALL OAK TREE ON SITE**

<p><b>EMK &amp; ASSOCIATES, INC.</b> ENGINEERING • PLANNING • SURVEYING 2113 1/2 STREET, PASO ROBLES, CALIFORNIA 93271</p>		<p><b>TRACT 2223 PHASE 2 OAK TREE EXHIBIT INDEX SHEET</b></p>	
<p>PROJ. NO.: 08-138      DATE: 12/98</p>		<p>DEPARTMENT OF PUBLIC WORKS CITY OF PASO ROBLES, CALIFORNIA</p>	
<p>DESIGNED BY: M.A.M. DRAWN BY: M.A.M. CHECKED BY: RECORD DATE:</p>		<p>SCALE: AS SHOWN ACCEPTED BY: _____ DATE: _____ SHEET NO. 1 OF 3 SHEETS DRAWING NO.:</p>	



13-4





OAK TREE NUMBER	OAK TREE TRUNK DIA.	REMOVE PER TENTATIVE	REQUEST PERMIT FOR REMOVAL
1	24"	YES	YES
2	14"	YES	YES
3	14"	YES	YES
4	5"	YES	YES
5	6"	YES	YES
6	18"	YES	YES
7	24"	YES	YES
8	24"	YES	NO
9	8"	YES	YES
10	36"	YES	YES

**TRAK & ASSOCIATES, INC.**  
 ENGINEERING & PLANNING & SURVEYING  
 10000 W. 10TH AVE., SUITE 200, DENVER, CO 80202  
 PHONE: 303-751-1100 FAX: 303-751-1101

DATE: 12/90  
 PROJECT NO: 44-238  
 SHEET NO. 2  
 OF SHEETS 2  
 DRAWING NO. 44-238-02

APPROVED BY: [Signature]  
 CHECKED BY: [Signature]  
 DESIGNED BY: [Signature]  
 DRAWN BY: [Signature]

SCALE: AS SHOWN  
 PERSONS: M.A.K.  
 DATE: 12/90

RECORD NO. 44-238-02

**TRACT 2223 PHASE 2**  
**OAK TREE EXHIBIT**  
**SHEET 2**

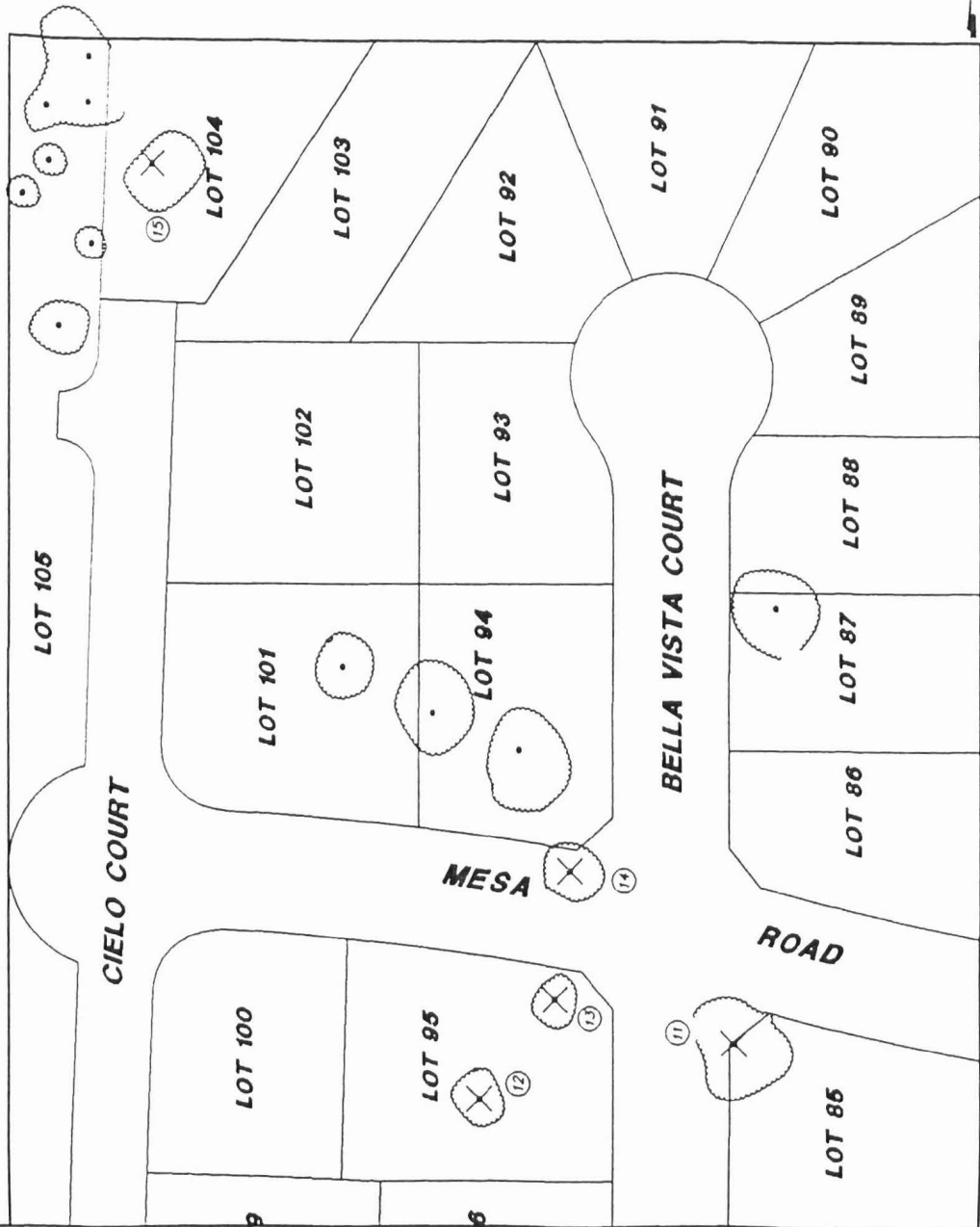
APPROVED BY: [Signature]  
 DATE: 12/90

RECORD NO. 44-238-02





# HIGHWAY 46



OAK TREE NUMBER	OAK TREE TRUNK DIA	REMOVE PER TENTATIVE	REQUEST PERMIT FOR REMOVAL
11	28"	YES	YES
12	22"	NO	YES
13	18"	YES	YES
14	24"	YES	YES
15	20"	NO	YES

**STANLEY & ASSOCIATES, INC.**  
 ENGINEERS & ARCHITECTS  
 21346  
 1500 S. GARDEN ST. SUITE 200  
 ANAHEIM, CALIF. 92805  
 TEL: 714/771-1111  
 FAX: 714/771-1112

DATE: 12/7/94

PROJECT NO. AN-134

SCALE: AS SHOWN  
 DRAWN BY: J. L. L. S.  
 CHECKED BY: J. L. L. S.  
 APPROVED BY: J. L. L. S.

DEPARTMENT OF PUBLIC WORKS  
 DIVISION OF PUBLIC UTILITIES  
 OCCUPIED BY: DATE: SHEET NO. 3  
 OF SHEETS  
 DRAWING NO.

TRACT 2228 PHASE 2  
 OAK TREE EXHIBIT  
 SHEET 3

136

